



Optimizing Live and Digital Media Services with LTE Broadcast

Norman Tyrrell, Qualcomm, Inc.

April 25, 2012





The information contained herein is for informational purposes only. Any dates, release numbers, features, capabilities, applications and upgrades, both existing and future, are subject to change at any time without notice.

Nothing in these materials is an offer to sell any of the components or devices referenced herein. Certain components for use in the U.S. are available only through licensed suppliers.



Qualcomm is a registered trademark and registered service mark of Qualcomm Incorporated. Other products and brand names may be trademarks or registered trademarks of their respective owners. All logos and brands mentioned in this presentations are used as illustrative examples only and do not imply relationships of any kind.

Export of this technology may be controlled by the U.S. Government. Diversion contrary to U.S. law is prohibited.

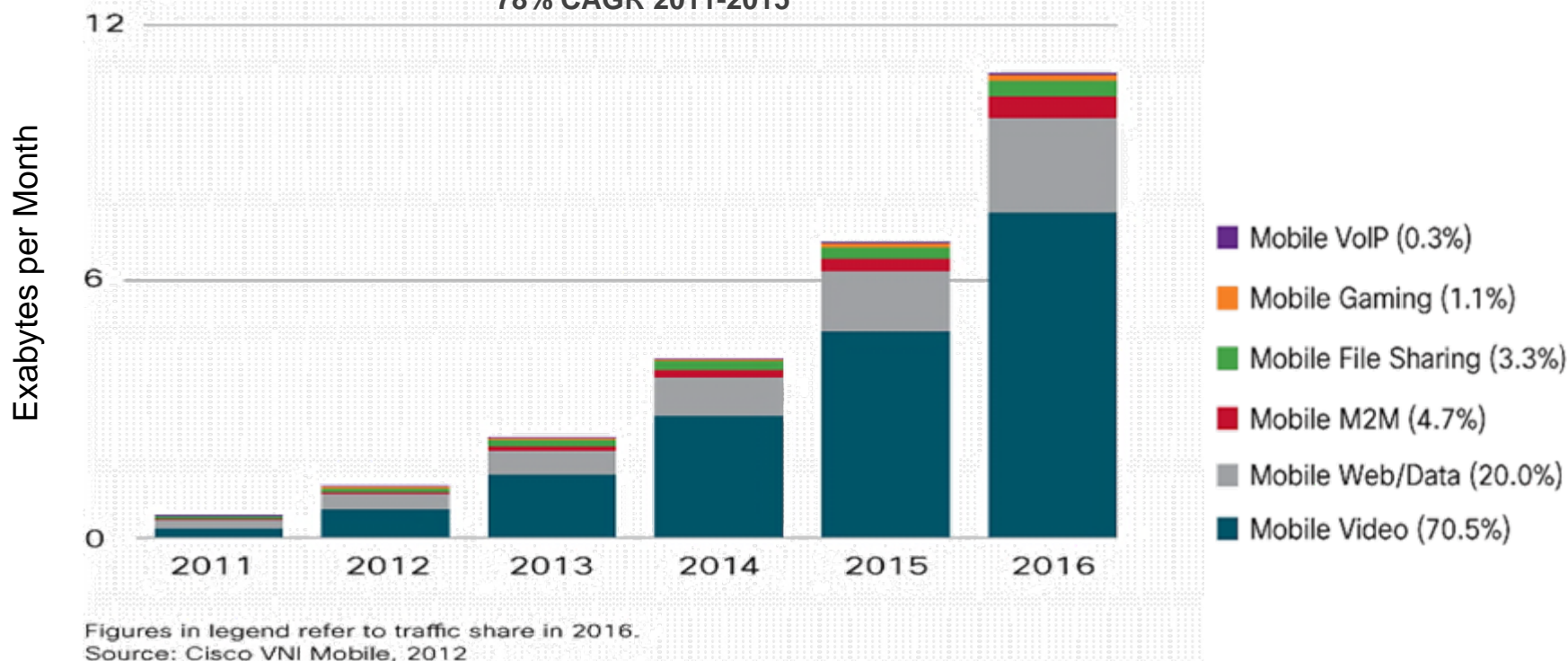
© 2012 Qualcomm Incorporated

Data Demand Outpacing Supply

VIDEO IS A “KILLER APP” FOR MOBILE NETWORKS

WW Mobile Rich Media Demand Growth

78% CAGR 2011-2015





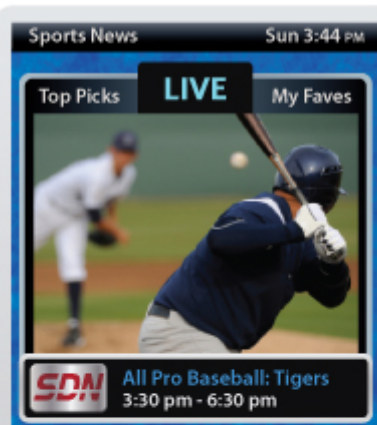
Enabling Live and Digital Media Services

LTE Broadcast

- eMBMS - evolved Multimedia Broadcast Multicast Service
 - Efficient and low cost solution
 - Unlimited subscriber reach
 - Reduces delivery costs and offloads data from unicast
 - Leverages worldwide LTE spectrum and 3GPP ecosystem

LTE Broadcast Enabled Service Opportunities

Drive ARPU and Reduce Cost



DELIVER LIVE EVENTS

- Live sporting events
- Breaking news
- "Must-see" live events
- Venuecasting



DISTRIBUTE EMEDIA

- Catch-up TV
- Print media delivery
- Digital signage
- Targeted advertising
- eLearning



OFFLOAD DATA

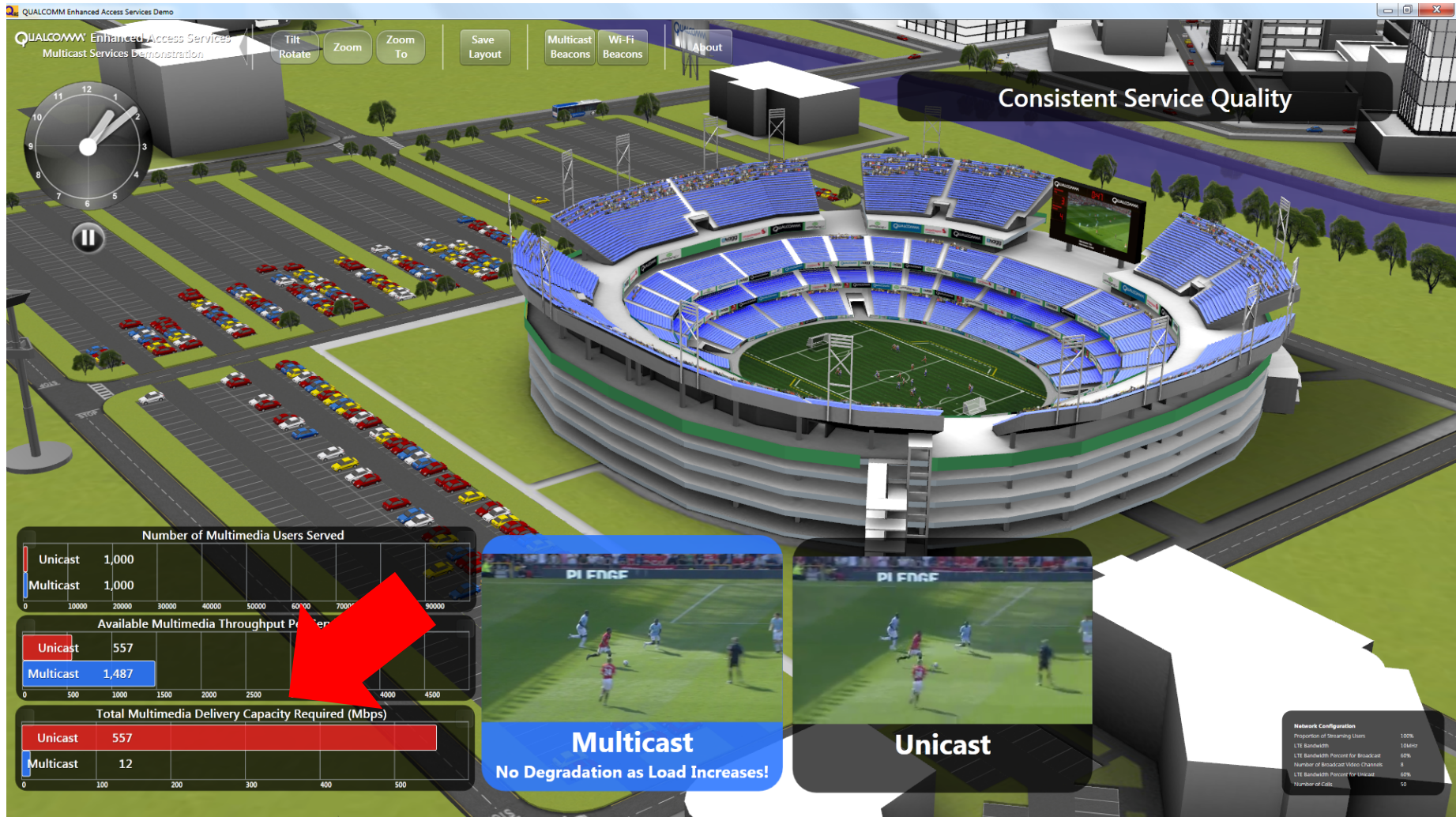
- Firmware Over the Air (FOTA)
- Featured applications
- Popular application updates
- Live tickers



MANAGE CONGESTION

- Breaking news triggered media content
- Top YouTube video clips
- Machine-to-machine

Scalable Video Delivery for Live Events



- As number of users increases, unicast network capacity is strained...

Scalable Video Delivery for Live Events



- Broadcast/multicast delivers consistent quality regardless of number of users.

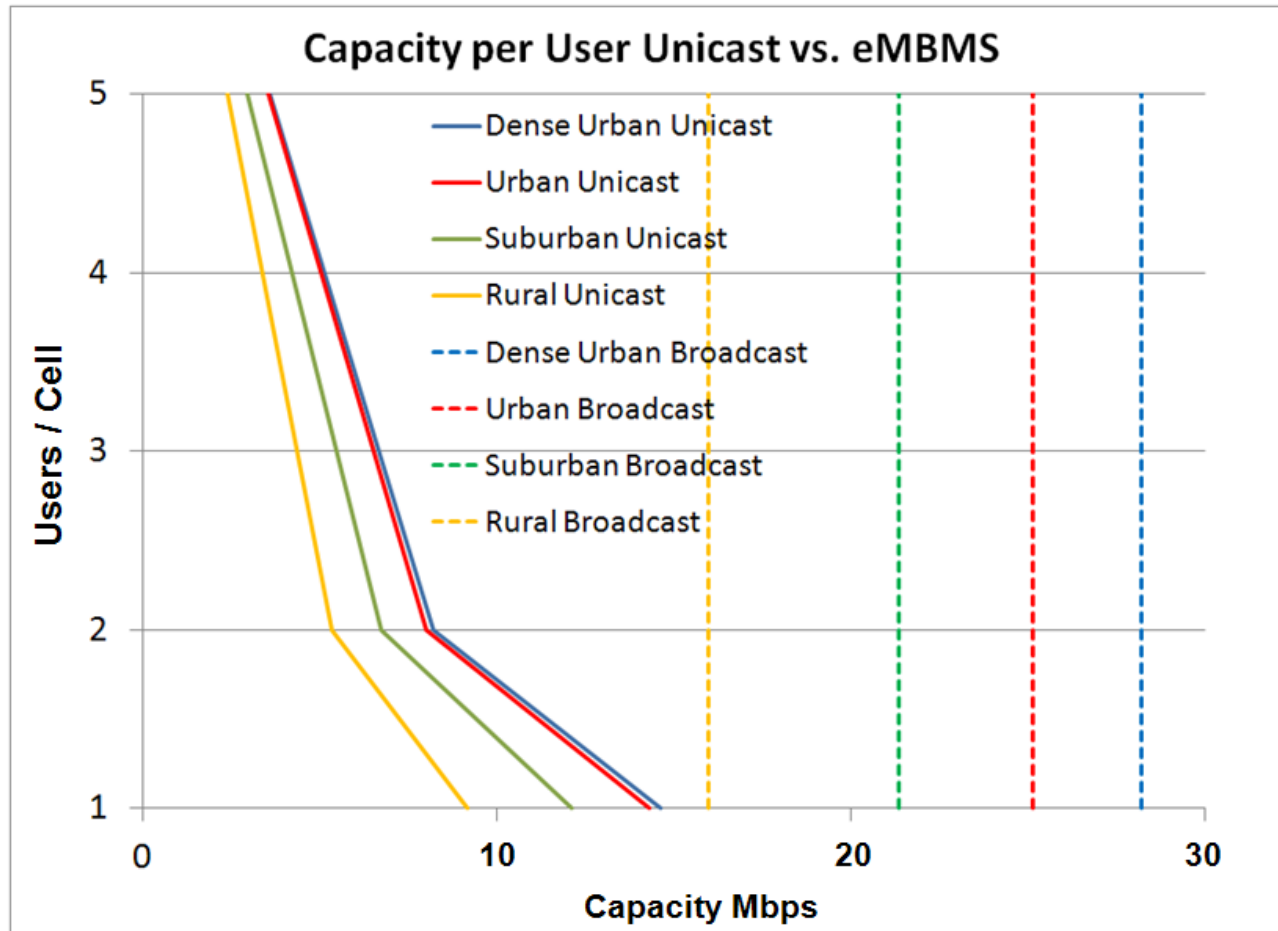
Off-Peak Media and Software Delivery



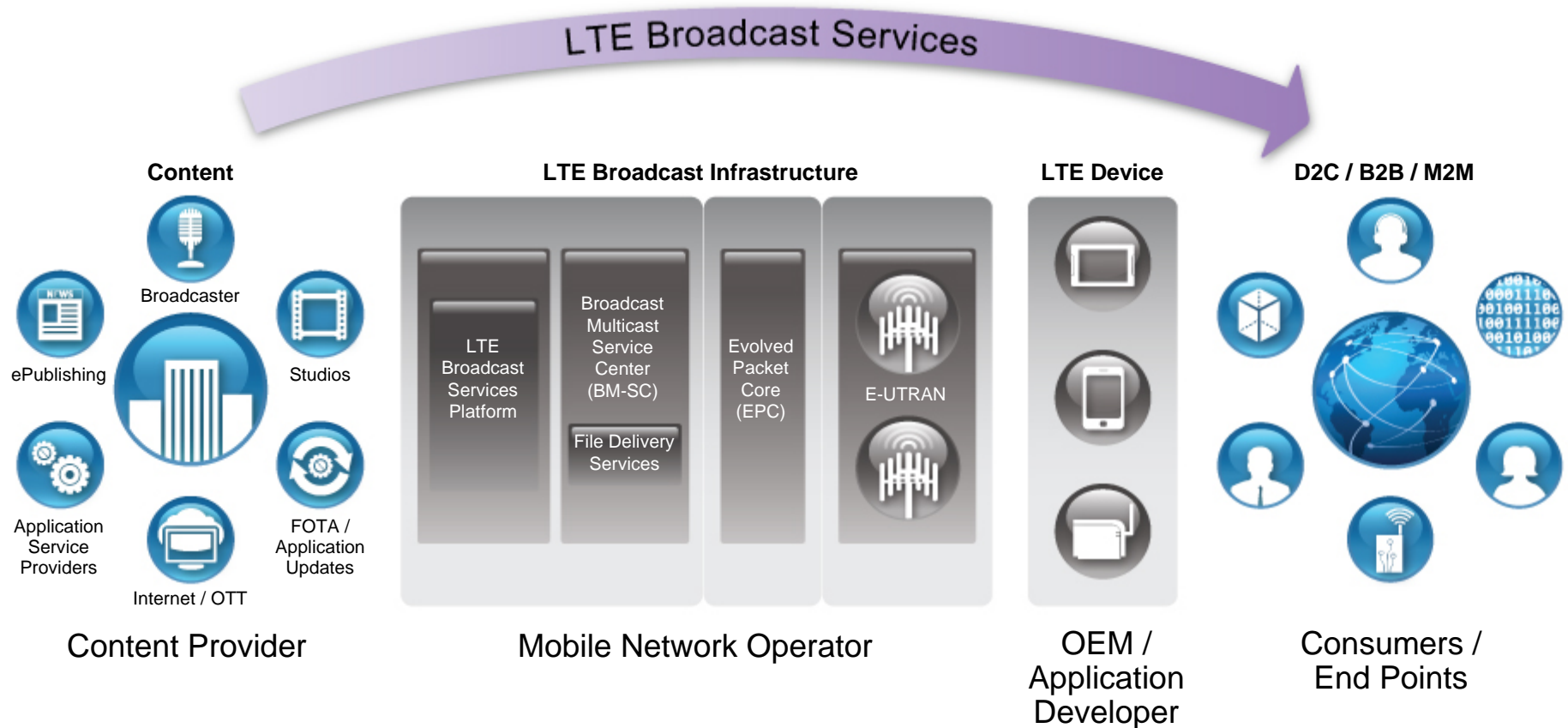
- File download use cases minimize the user's utilization of unicast delivery.

Optimizing Capacity with LTE Broadcast

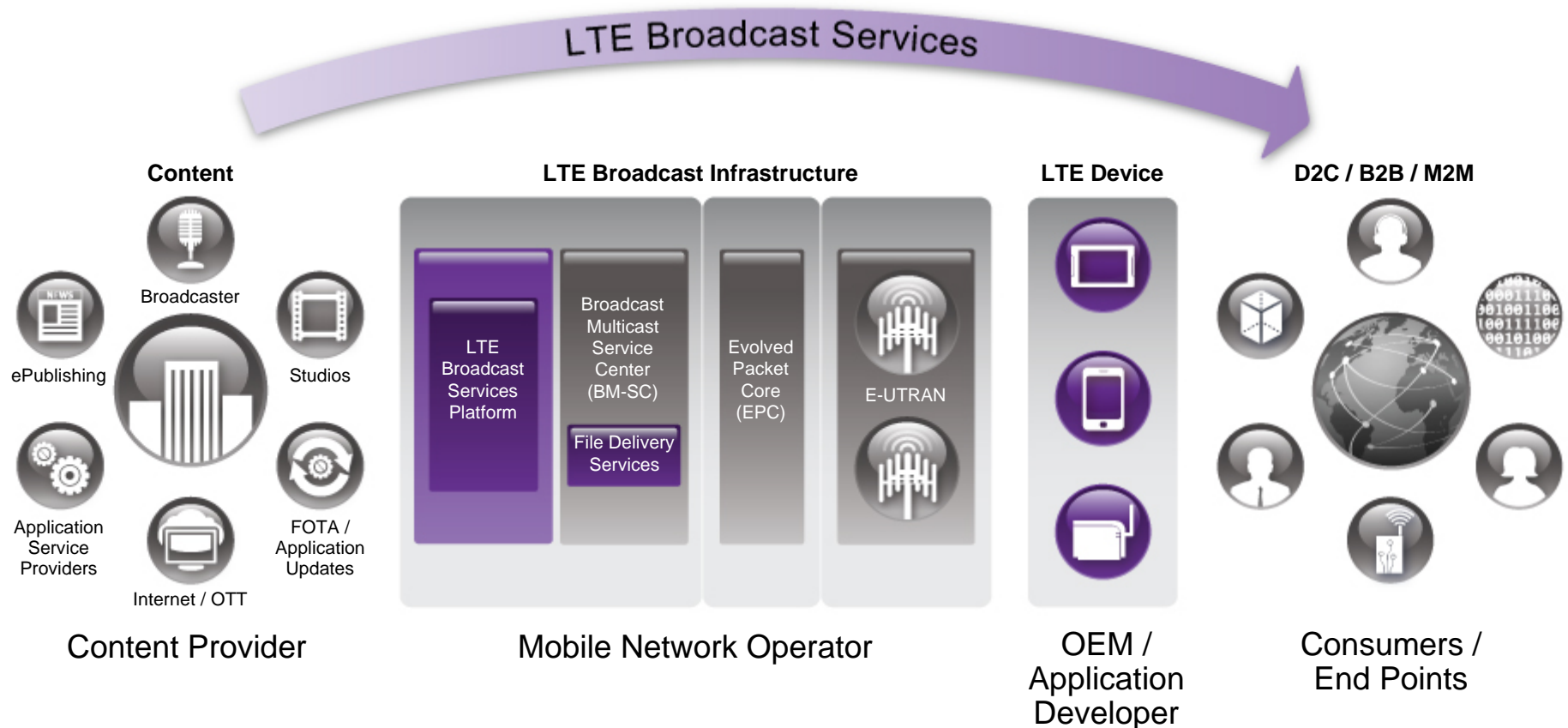
- Significant capacity gains are possible, when the number of users of a specific service per cell exceeds 1 user per cell, i.e. 3 users per site



LTE Broadcast Services Ecosystem

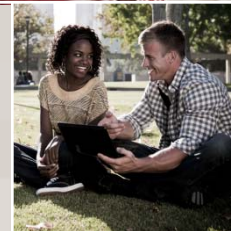
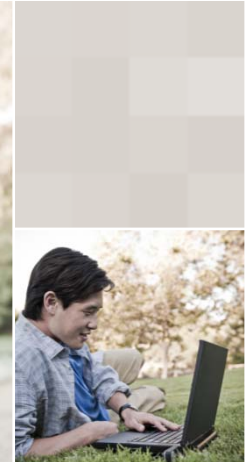
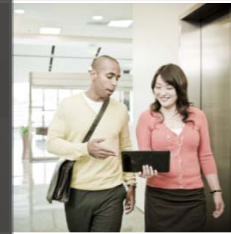
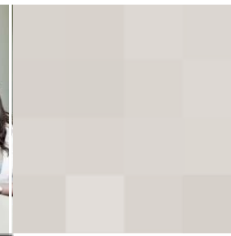


LTE Broadcast Services Ecosystem



Qualcomm Is a Leader in Next-Generation Mobile Broadcast Technologies

- Enabling LTE broadcast is an essential strategy to meet ever-increasing data volumes
- Multicast use cases reduce cost, drive ARPU
- Qualcomm has a 3GPP-based, end-to-end solution enabling efficient and high quality broadcast services on LTE





Thank You!

Follow us on:



Norman E. Tyrrell
Director, Business Development
Qualcomm, Inc.
ntyrrrell@qualcomm.com

For more information on Qualcomm, visit us at:
www.qualcomm.com
www.qualcomm.com/blog